

The logo consists of the letters "Lgn" in a white, sans-serif font, centered within a solid yellow square.

Lgn

LEGEND GOLD CORP

# MINERAL EXPLORATION IN AFRICA

Diba Project  
April 2016

TSX-V: LGN

[www.legendgold.com](http://www.legendgold.com)

# Cautionary Statements

Certain information included in this material constitutes "forward-looking statements". The words "expect", "will", "intend", "estimate" and similar expressions identify forward-looking statements. Forward-looking statements are necessarily based upon a number of estimates and assumptions that, while considered reasonable by management, are inherently subject to significant business, economic and competitive uncertainties and contingencies. The Company cautions the reader that such forward-looking statements involve known and unknown risks, uncertainties and other factors that may cause the actual results, performance or achievements of the Company to be materially different from the Company's estimated future results, performance or achievements expressed or implied by those forward-looking statements and the forward-looking statements are not guarantees of future performance. These risks, uncertainties and other factors include, but are not limited to, risks associated with the mining industry such as government regulation, environmental and reclamation risks, title disputes or claims, success of mining activities, future commodity prices, costs of production, possible variation in mineral reserves, mineral resources, grade or recovery rates, failure of plant, equipment or processes to operate as anticipated, accidents, labour disputes, the timing of estimated future production, capital expenditures, financial market fluctuations, requirements for additional capital, conclusions of economic evaluations, limitations on insurance coverage, risks associated with using third-party contractors and inflation. The Company disclaims any intention or obligation to update or revise any forward-looking statements whether as a result of new information, future events or otherwise, except as required by applicable law.

Dr. Demetrius Pohl, PhD., Certified Professional Geoscientist (CPG), an independent consultant, is the Company's qualified person for the purposes of national instrument 43-101 standards of disclosures for mineral projects of the Canadian securities administrators, and is responsible for the accuracy of, and has verified, the technical information in this presentation and has approved its written disclosure.

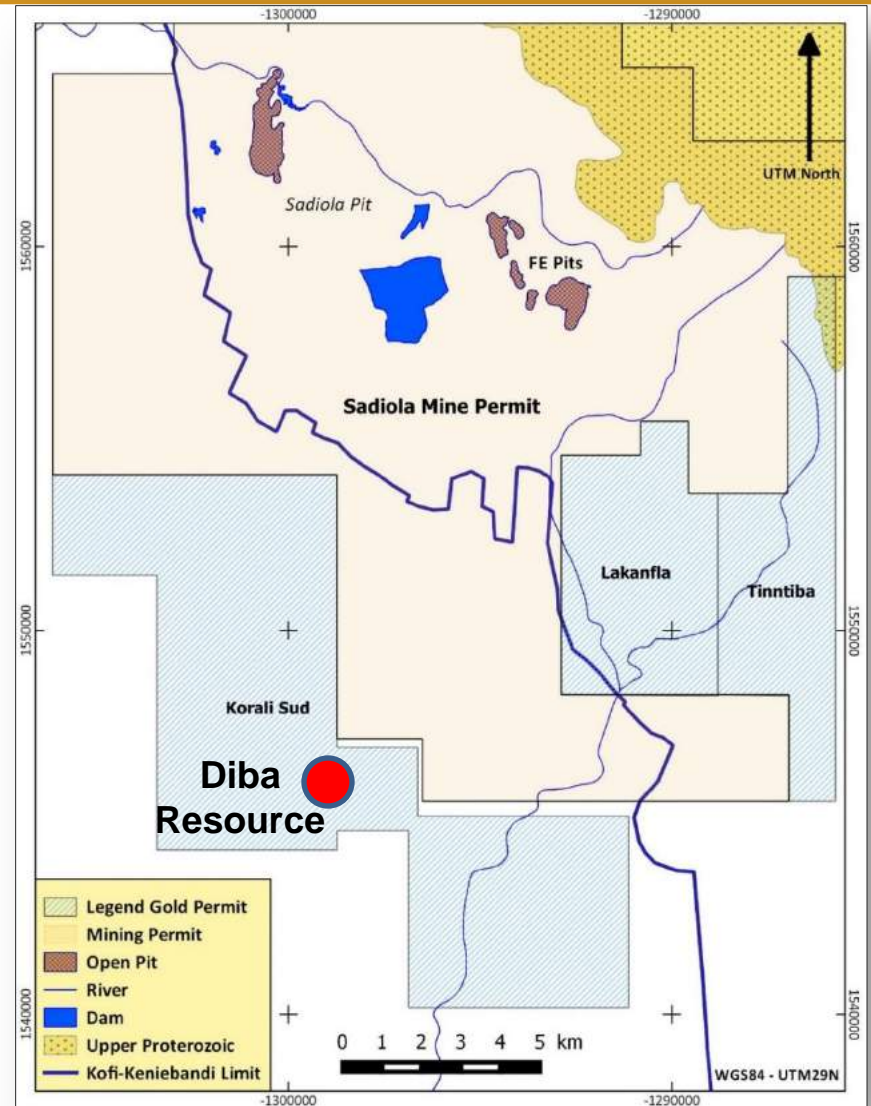
# Diba Project

## OVERVIEW

- 15 km south of the Sadiola mine (JV of AngloAshanti, IAMGOLD and Mali Government)
- Sediment-hosted, disseminated epigenetic, replacement gold deposit
- Shallow dipping orebodies with potentially low strip ratio
- Compact resource geometry

## OPPORTUNITY

- Extend mineralization into sulfide zone
- Potential feed for Sadiola mine mill



# Diba Project - District Geology

## NE Kenieba Window – Lower Proterozoic – ‘Birimian’

### Keniebandi Group

- Bimodal volcanism – andesites and rhyolites
- Calcareous sediments – conglomerate, sandstone and shales
- Frequent felsic intrusives
- Thrust (west over east) over the Kofi Group

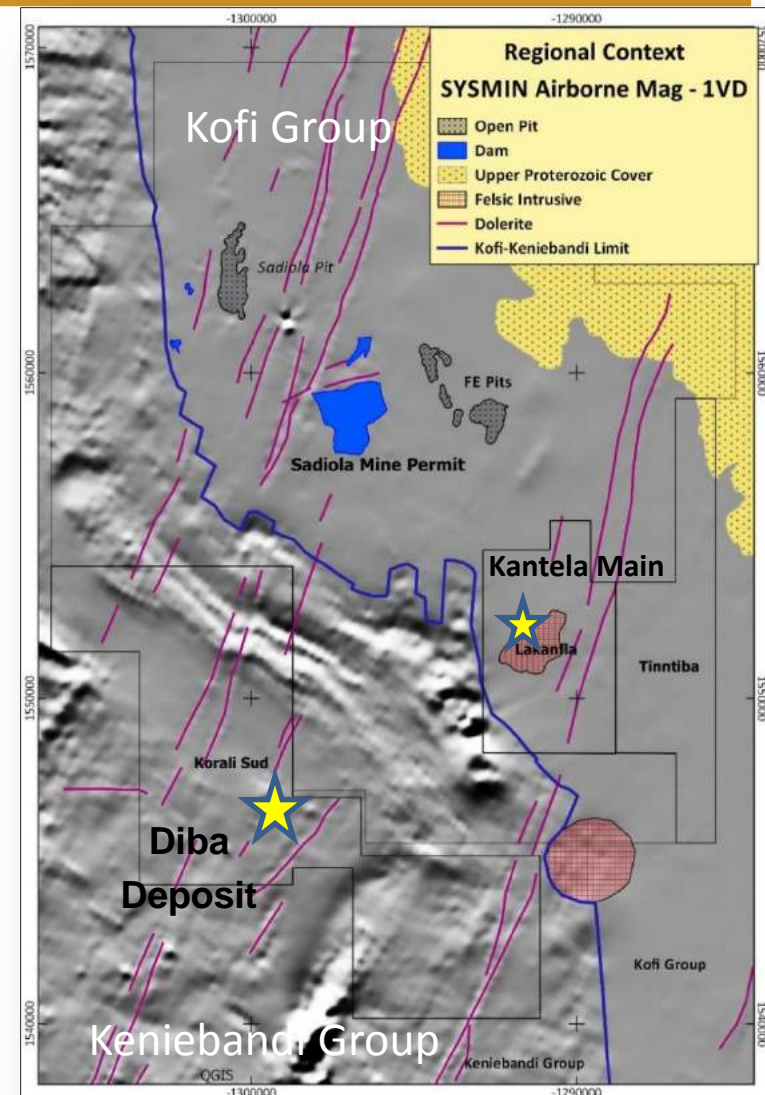
### Kofi Group

- Limestone, usually with a strong detrital component locally referred to as marble or ‘cipolin’
- Fine-grained greywacke and black shale
- Quartzite
- Minor felsic and diorite intrusives
- Complex folding and thrusting history
- Host to most of the gold mineralization in western Mali

### Upper Proterozoic Cover

- Undeformed and unconformably overlying Birimian

### Dolerite Dykes





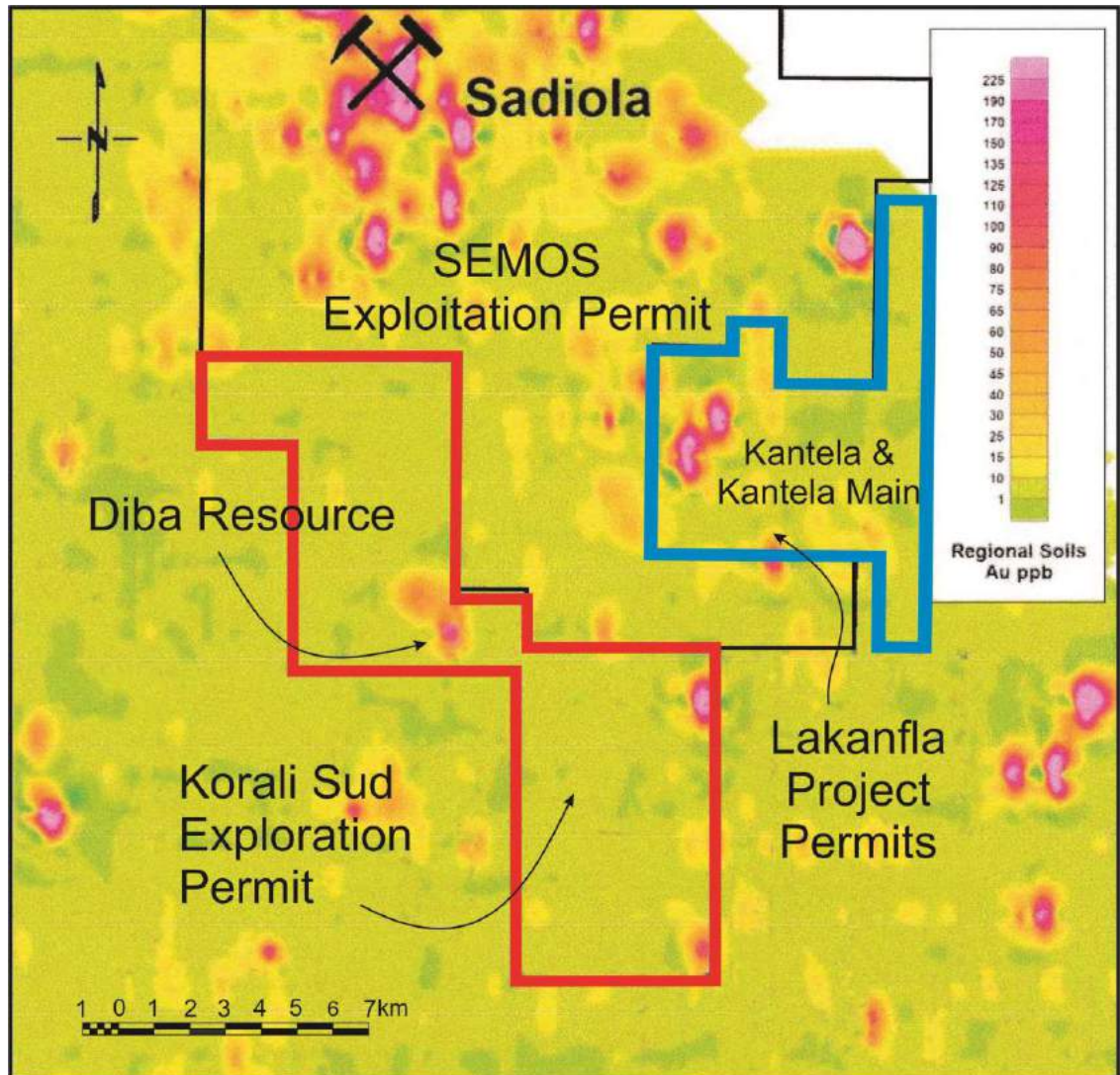
# Diba Project – Regional Geochem

Mali West regional soil  
geochem survey  
Klockner-EU 1987-1989

2.5 km gold-in-soil anomaly  
at Diba

No artisanal workings

Anomaly centered on laterite  
plateau



# Diba Project - Previous work

## Etruscan Resources Soil and Auger Geochem 2001 - 2005

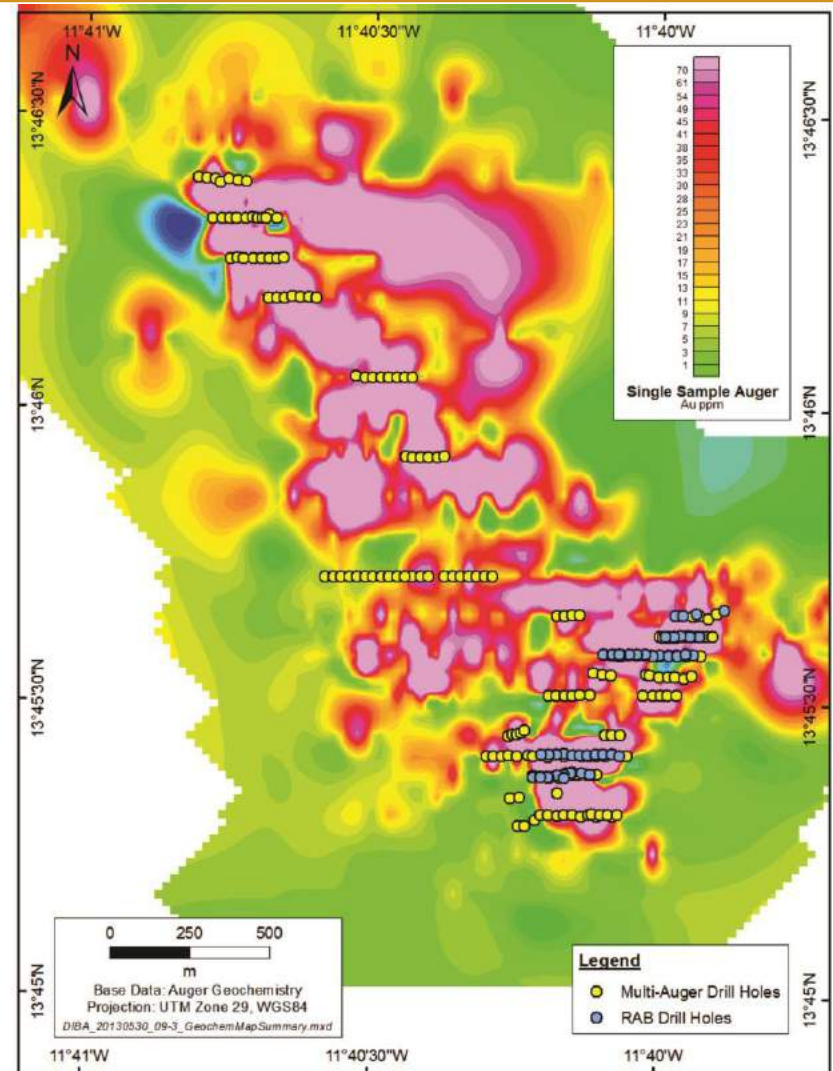
Survey type	Grid	No. samples
Regional soil	500 m x 200 m	700
Semi-regional soil	250 m x 100 m	400
Single auger	Regional	472
Single auger	Detailed	300
Deep auger	Detailed	165

## Terra Tec Mali Ground Geophysics 2006-2007

IP and HIRIP, ground magnetics  
116 line km

## Geotech VTEM 2008

3,546 line-km



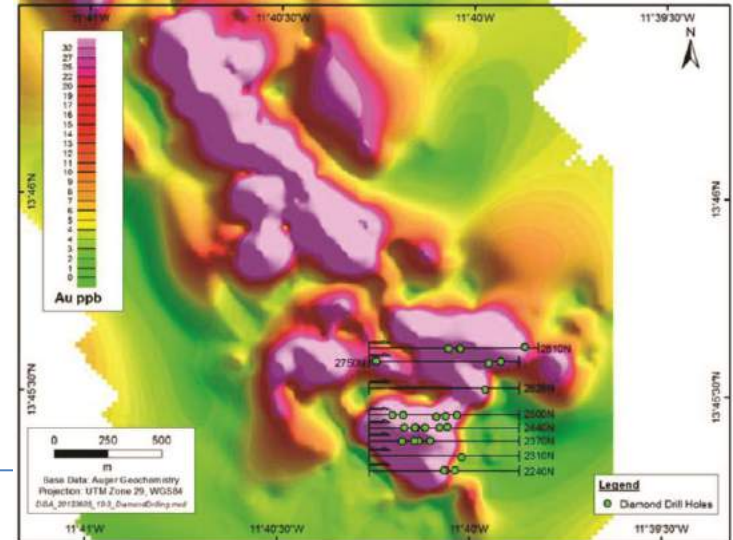
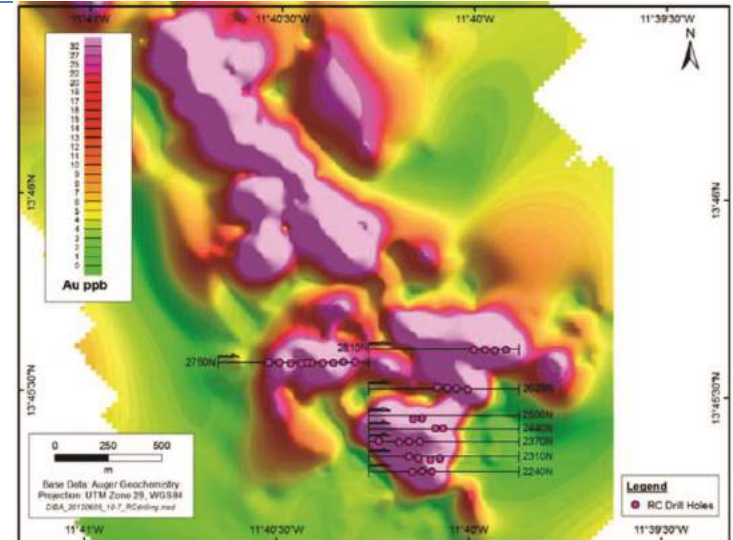
# Diba - Drilling

## Etruscan drilling

2006-2007	RAB	148	5,575
2006-2007	DDDH	92	13,348
2006-2007	RC	33	3,241
2008	RAB	182	6,104
2008	RC	76	3,429
<b>Total</b>		<b>531</b>	<b>31,697</b>

## Legend drilling

2014	AC	300	4,402
2014	RC	59	5,067
<b>Total</b>		<b>359</b>	<b>9,469</b>



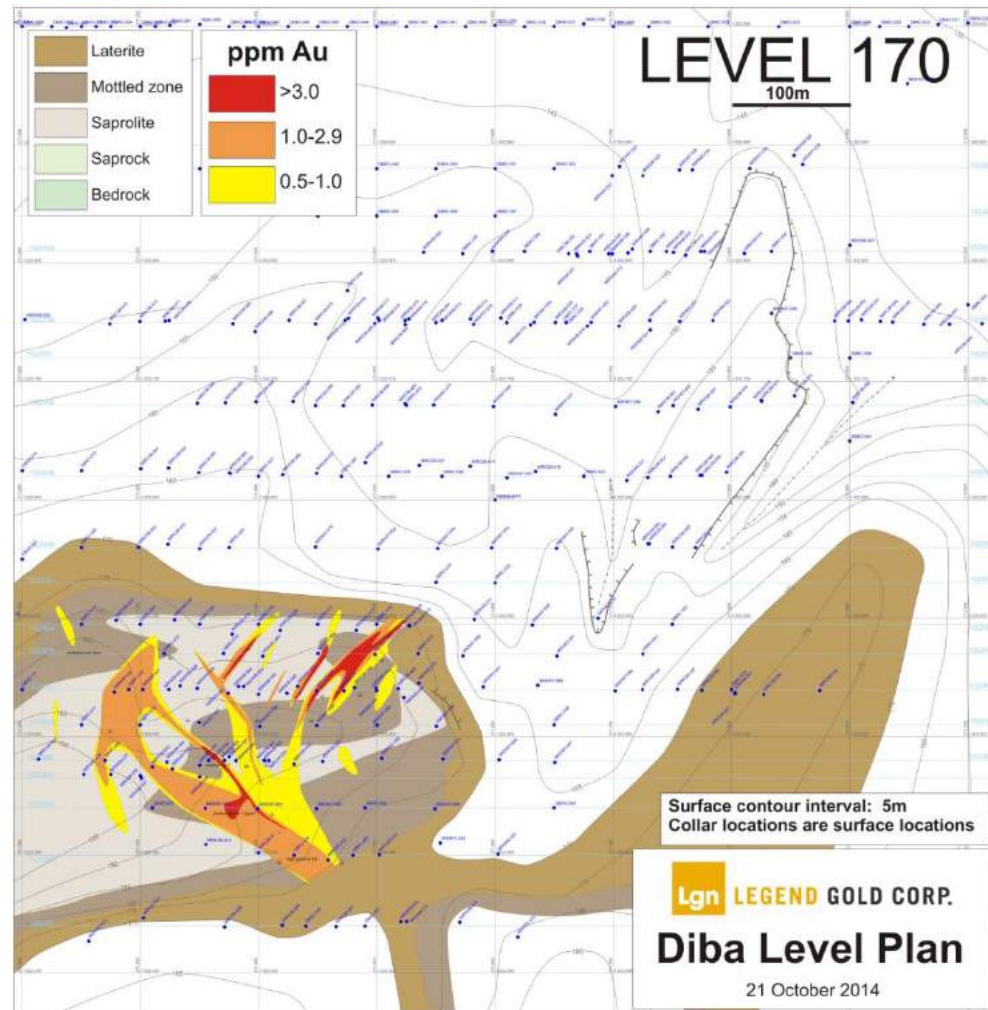


# Diba Project: Resource

- Most mineralization in oxide zone
- Compact orebody, 300 x 400 in plan view
- Shallow dip, 35-40 degrees to southeast
- Within 50m of surface
- Low potential strip ratio
- Laterite overburden on topographic high

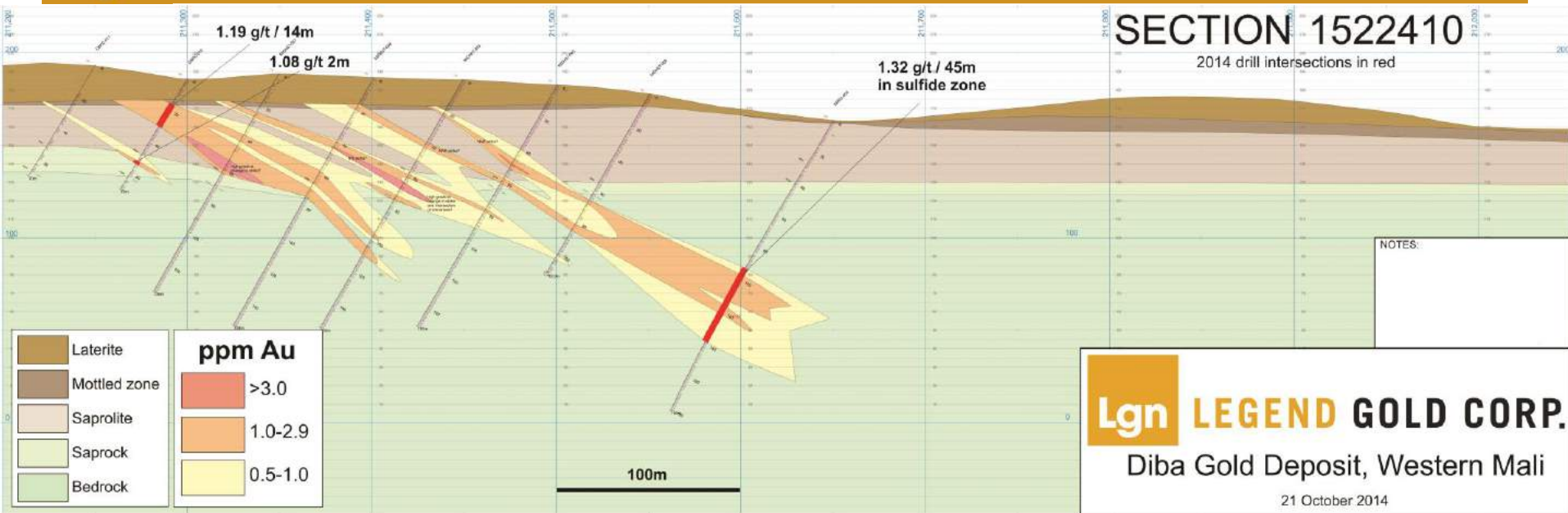
CATEGORY	TON (kt)	Au GRADE (g/t)	Au METAL (koz)
Indicated	<b>6,348</b>	<b>1.35</b>	<b>275.2</b>
Inferred	<b>721</b>	<b>1.40</b>	<b>32.5</b>

(\* ) 0.5 g/t cut-off grade (\*\* ) 2013 NI 43-101 Technical Report



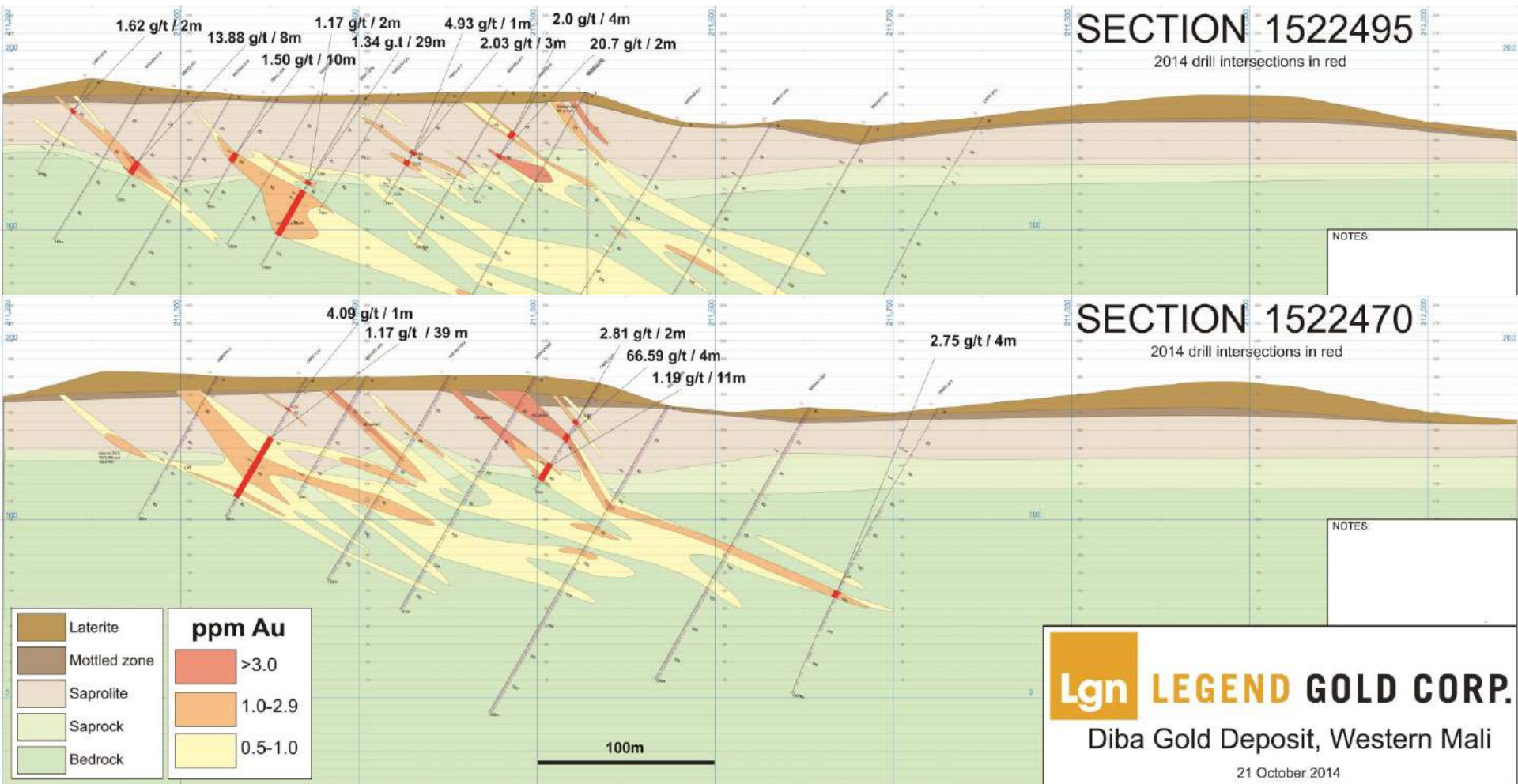


# Diba Project



- Oxide mineralization with 50m of surface
- Mineralization controlled by NW and NE structures
- Mineralization fine-grained, disseminated as well as localized high-grade calcite-quartz-gold veinlets
- Most mineralization in saprolite
- Alteration albite-hematite+-pyrite, generally very low <1% pyrite
- Potential down-dip extension in sulfide zone 45m-wide zone (DBRC-009)

# Diba Project



2014 Infill drilling confirmed resource and increased confidence level



Lgn

LEGEND GOLD CORP

MINERAL EXPLORATION IN AFRICA

T: 604 696 9396

Email: [info@legendgold.com](mailto:info@legendgold.com)

[www.legendgold.com](http://www.legendgold.com)

TSX-V: LGN